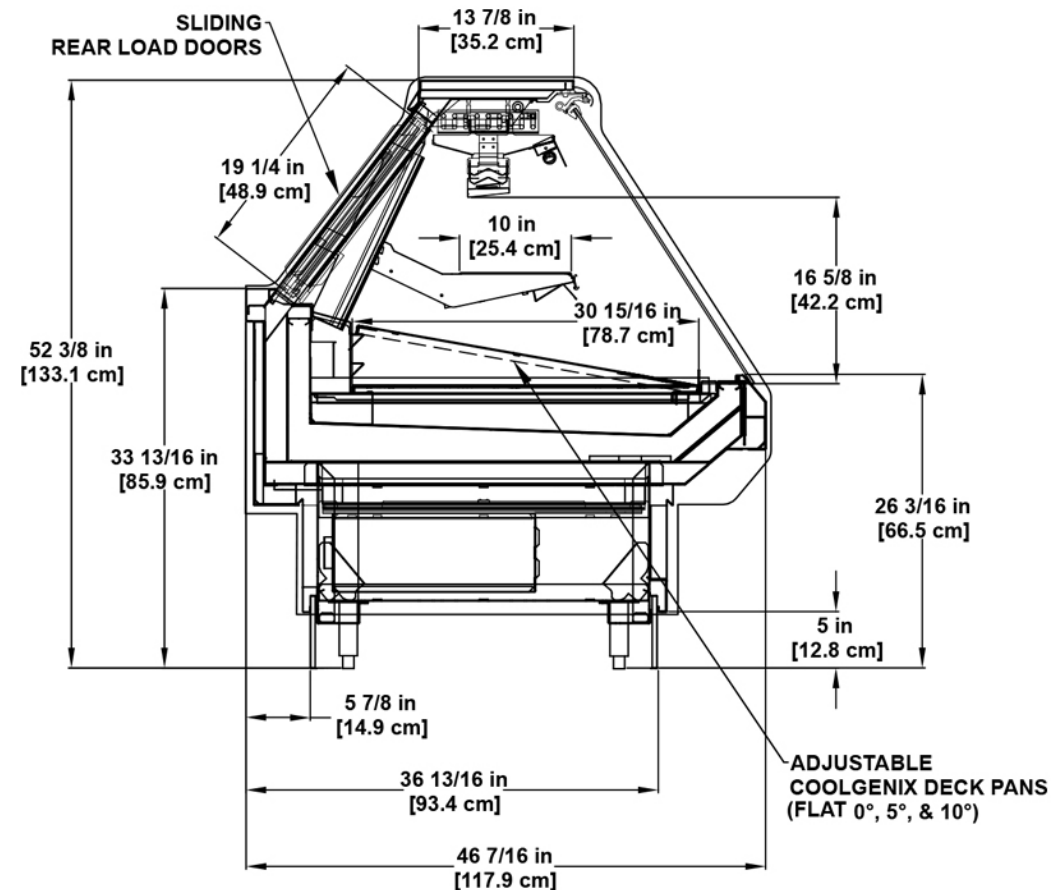


Coolgenix® Cleaning Instructions

• Pre-Cleaning Check List

- ❑ Identify the cases that need to be cleaned. Multiple cases usually run on the same refrigeration circuit, so plan on cleaning all cases on that circuit at one time.
- ❑ Post safety signs in the area of the cases that are going to be cleaned.
- ❑ Remove the product from the cases and relocate it to a refrigerated storage area.
- ❑ Turn off refrigeration to the cases and the electrical circuits to the case.
- ❑ Wait for Coolgenix deck pans to be at room temperature before removing them. The Center pan will have a sensor that needs to be detached before removing the pan.
- ❑ Visually inspect the case for debris and ice and check drains for blockage.
- ❑ Gather all necessary cleaning materials.

S2SGC Coolgenix



*Shown with optional shelving.

Case Cleaning

- Step 1

Remove the product from the case before cleaning.

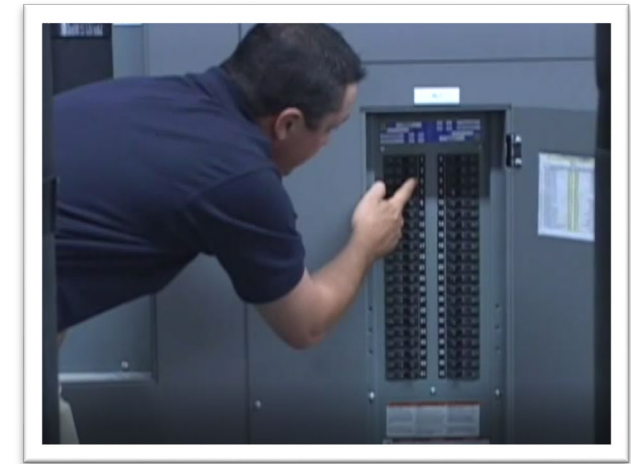


Case Cleaning

• Step 2

Turn the **power off** to the case at the electrical panel.

- ☐ If the case is equipped with a cleaning button.
Simply push the button located on the rear panel of the case to put the case into a 90-minute delay for cleaning. After 90 minutes, the refrigeration to the case will automatically turn back on.
- ☐ If the case is equipped with a manual cleaning toggle or flip switch, simply flip the clean switch to turn off the refrigeration. This should be located on the rear panel of the case.
- ☐ If you are unable to turn the refrigeration off with the methods already mentioned, you can turn the refrigeration off at the Dixell Controller. The controller is located behind the rear lower panel on the case.
- ☐ On the Dixell Controller, push down on the button with the snowflake for 2 or more seconds and a manual defrost will start on the Dixell Controller. The Dixell Controller must be turned back on when finished cleaning. If your case is equipped with a different type of controller, refer to the controller manual on how to put the case into manual defrost for cleaning.



Case Cleaning

CAUTION:

DO NOT DISCONNECT COOLGENIX PANS FROM THE CASE WITH QUICK-CONNECT HOSES UNTIL THE PAN HAS REACHED ROOM TEMPERATURE.

DO NOT PUT COOLGENIX PANS IN THE DISHWASHER. ELEVATED TEMPERATURES CAN CAUSE THE PANS TO DISTORT AND/OR LEAK WITH INCREASED INTERNAL TEMPERATURE.



Case Cleaning

• Step 3

- ❑ Remove the sensor attached at the bottom of the center deck pan. It is important to detach the sensor before removing the pan.
- ❑ Remove the interior Coolgenix deck pans and spanner bars from the display when the pans are at room temperature. From the back side of the case, lift each pan and tilt to gain access to the quick connect hoses to disconnect.
- ❑ To disconnect the hoses, push the release button on the hose connection and pull the quick-connect hoses apart. Don't worry, it is normal for a few drops of the food-grade solution to escape when disconnecting the pans.
- ❑ If the pans are not equipped with quick-connect hoses lean them against the front of the case until the case tank is cleaned. See the picture on the next page.



Sensor Location



Optional Quick
Connect on
Hoses

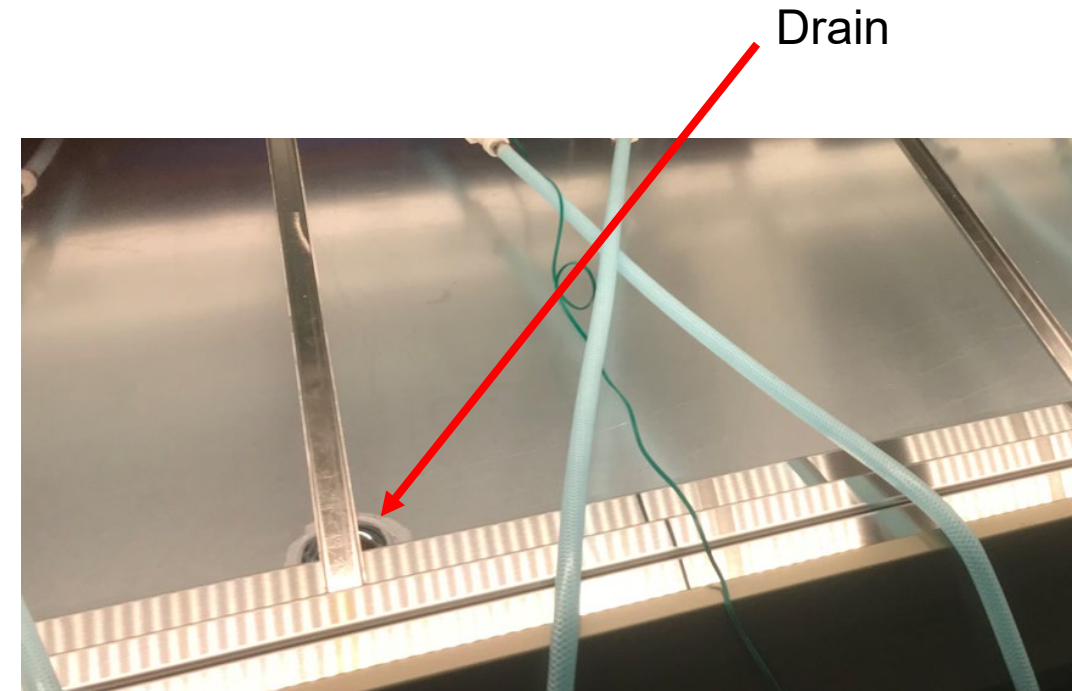
Case Cleaning

• Step 4

- ❑ After Coolgenix pans are removed, check to make sure the drain is not clogged from ice or food particles. Remove any debris before cleaning.



For cases without quick-connect hoses, place pans in front of the case as shown prior to cleaning the interior case tank.



Drain

Interior Case Cleaning

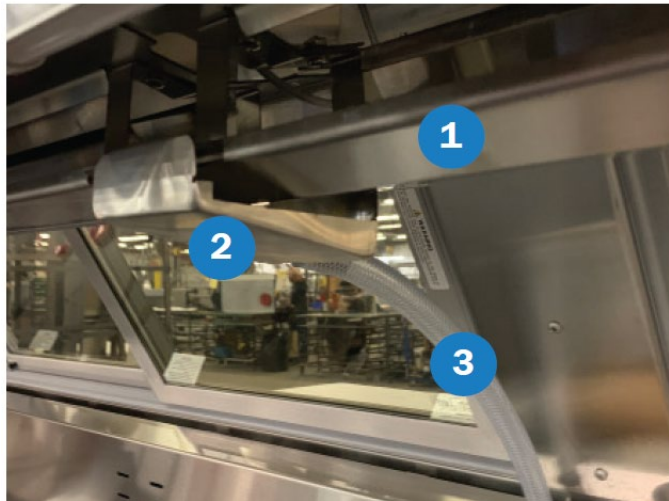
• Step 5

- ☐ Thoroughly spray the tank, deck pans, spanner bars, and shelves with soap and warm water or a cleaning solution and let stand for 5 minutes.
- ☐ Do not put Coolgenix pans in the dishwasher.
- ☐ Do not spray cleaning solution or water directly on electrical connections.
- ☐ Scrub heavily soiled areas with a non-abrasive cleaning pad or brush.
- ☐ Rinse the case interior, Coolgenix deck pans, spanner bars, and shelves using warm water. Wipe dry.
- ☐ Apply a sanitizer solution.
- ☐ Allow the interior case to air dry.



Interior Case Cleaning - Continued

- ❑ The drip rail located under the top gravity coil in the display case should not be removed. Removing it could cause condensation to not drain properly.
- ❑ Do not spray the top coil or light reflector during the cleaning process.
- ❑ If a build-up is inside the drip rail, gently spray out the pans with warm water without removing the drip rails. Any build-up should wash down the drain. Completely dry the exterior bottom of the drip rail with a soft cloth after cleaning to prevent condensation build-up.



- 1 Drip rail:** Catches the water droplets generated from the case coil.
- 2 Catch Pan:** Connects to the outside of the drip rail and collects water from the drip rail.
- 3 Drain hose:** The drain hose is connected to the catch pan. Water drains down into the hose and into the case tank.

Interior Case Cleaning - Continued

What if the catch pan or drip rail is bumped loose during cleaning?



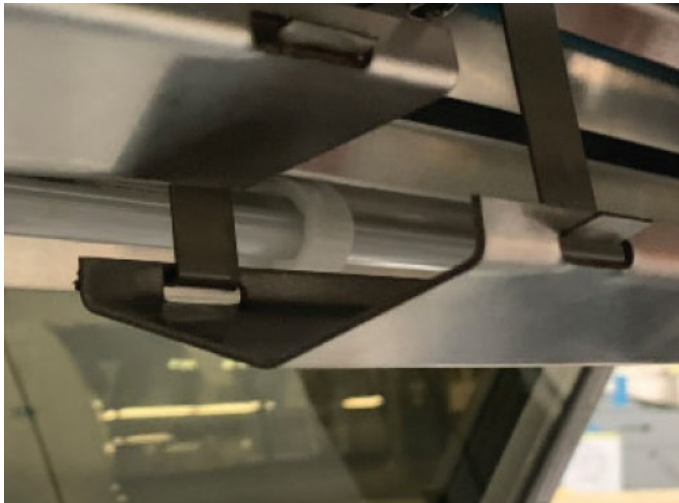
1

When cleaning or merchandising the case, it is possible that either the catch pan, drip rail, or both can be knocked loose. It is very easy to reinstall each item and you can be back on track within a matter of minutes. The most important thing to remember is to ensure each part is attached correctly to the provided clips.



2

Locate the drip rail clips which are attached to the inside top of the display case and right in front of the light fixture. There should be two sets of brackets with one set on each end of the drip rail.



3

Insert the front and back clips into the slots located on each end of the drip rail. Ensure the clips are completely inserted.



4

Attach the catch pan by clipping it over the front and back of the end of the drip rail. The end of the hose should be at the back of the case.

Case Cleaning

• Step 6

Exterior Case Cleaning:

- ☐ Remove the rear load doors from the door track and wash and sanitize in a three-compartment sink. Spray with glass cleaner and wipe dry.
- ☐ If your case is equipped with a removable door track, simply lift the door track up off the locator pins. Wash, sanitize, and let dry before reinstalling back on the locator pins.
- ☐ Spray the exterior of the case down with a mild cleaning solution and wipe it down with a soft cloth or paper towel. This includes the case top sill, fixed full frame door track, end panels, and all exterior front and rear panels. Do not spray cleaning solution or water directly on electrical connections.
- ☐ If the case is equipped with cutting boards, spray the cutting board with a mild cleaning solution and wipe it down with a clean cloth or paper towel. Spray with sanitizer and air dry.
- ☐ Spray the exterior of the case with a sanitizer and wipe it down or allow it to air dry.
- ☐ Reinstall the parts that were removable such as the door track, rear load doors, and cutting boards.

Glass:

- ☐ Dry the interior glass with clean, dry paper towels after cleaning the interior of the case.
- ☐ Use a glass cleaner and a clean paper towel or cloth to wipe down the glass on both sides.

Case Cleaning

• Step 7

- ❑ Make sure that the drain is free of debris that could have accumulated during the cleaning process.
- ❑ Clean up any spills on the floor.
- ❑ Re-install the Coolgenix deck pans, spanner bars, and rear pan support bars back into the case. It is essential to insure the spanner bars are set back in place to prevent the pans from warping. Each display pan has a male and female quick connect end making it very easy to reinstall the deck pans.
- ❑ Reconnect the sensor to the center pan and insure proper contact with the pan. The sensor is essential for the case to properly function and maintain proper product temperatures.



Spanner Bars

Case Cleaning

- Step 8 After the case is cleaned...

- ☐ Turn on the electrical circuit after all components are dried. Verify the operation of the electrical components. Turn on the refrigeration to the case either at the power supply or....
- ☐ If your case was equipped with a cleaning button, the refrigeration will automatically turn back on after 90 minutes of the button being pushed.
- ☐ If your case is equipped with the toggle or flip switch, flip the switch to turn the refrigeration back on to the case.
- ☐ Once the proper temperature is established in the cases, restock them according to the store plan-o-gram.



Coolgenix Resources

*Click on links in presentation mode.



Coolgenix resources available to you on the Hillphoenix & Learning Center websites & YouTube Channel!

14 Coolgenix Videos on our YouTube Channel:

<https://youtu.be/QpiP35Aj8G0>

Training:

<https://youtu.be/G3iCJ2Perwg> Coolgenix Case Cleaning

<https://youtu.be/J-eBFy7LvAw> Coolgenix Merchandising

Sales Information on Hillphoenix website: www.Hillphoenix.com

[SMD-RGC Sales Sheet](#)

[SSGC Sales Sheet](#)

[S2SGC Sales Sheet](#)

[PTD-RGC Sales Sheet](#)

[GMD-RGC Sales Sheet](#)

White papers on our website:

[White-paper-Microclimates-Store-Display-Beef-Chicken](#)

[White-Paper-Character-Check-Meat-Poultry-Seafood-Integrity](#)

[White-paper-display-case-storing-Displaying-Meat](#)

[White-paper-display-case-right-case-for-job](#)